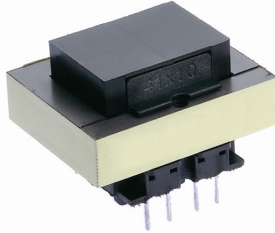


Universal Series Power Transformers



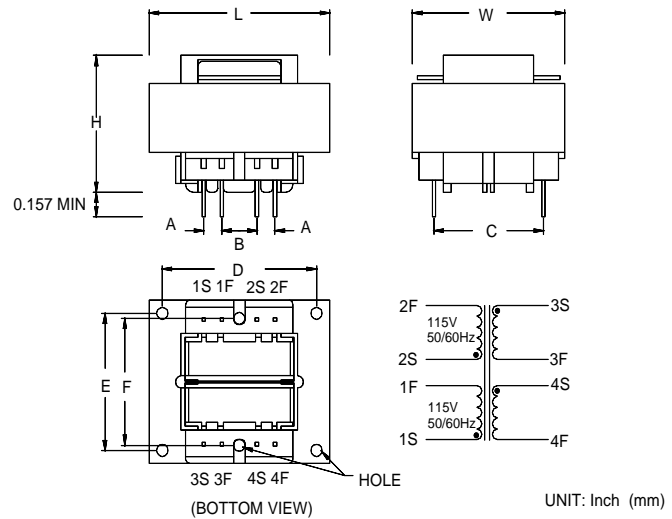
Phone: 1.605.884.0195
 Fax: 1.605.884.0199
 www.minntronix.com



- The MHS series of universal transformers is designed and built to meet U.S. and International Safety Standards
- These transformers are available in both PC and Chassis-mount construction
- Power ratings of 2.5VA to 56VA, these transformers are built on dual-bobbins with insulating shrouds to provide 4000VRMS isolation between primary and secondary
- Special construction reduces primary to secondary capacitance
- 115V Single or 115/230V 50/60Hz Dual Primary

Part Number	Size (VA)	SECONDARY RATINGS (RMS)	
		Series	Parallel
MHS-2.5-10	2.5	10V C.T. @ 0.25 A	5V @ 0.5A
MHS-5.0-10	5.0	10V C.T. @ 0.5 A	5V @ 1.0A
MHS-10-10	10.0	10V C.T. @ 1.0 A	5V @ 2.0A
MHS-20-10	20.0	10V C.T. @ 2.0 A	5V @ 4.0 A
MHS-30-10	30.0	10V C.T. @ 3.0 A	5V @ 6.0 A
MHS-56-10	56.0	10V C.T. @ 5.6 A	5V @ 11.2 A
MHS-2.5-12	2.5	12.6V C.T. @ 0.2 A	6.3V @ 0.4 A
MHS-5.0-12	5.0	12.6V C.T. @ 0.4 A	6.3V @ 0.8 A
MHS-10-12	10.0	12.6V C.T. @ 0.8 A	6.3V @ 1.6 A
MHS-20-12	20.0	12.6V C.T. @ 1.6 A	6.3V @ 3.2 A
MHS-30-12	30.0	12.6V C.T. @ 2.4 A	6.3V @ 4.8 A
MHS-56-12	56.0	12.6V C.T. @ 4.4 A	6.3V @ 8.8 A
MHS-2.5-16	2.5	16V C.T. @ 0.15 A	8V @ 0.3 A
MHS-5.0-16	5.0	16V C.T. @ 0.31 A	8V @ 0.62 A
MHS-10-16	10.0	16V C.T. @ 0.62 A	8V @ 1.25 A
MHS-20-16	20.0	16V C.T. @ 1.25 A	8V @ 2.5 A
MHS-30-16	30.0	16V C.T. @ 1.9 A	8V @ 3.8 A
MHS-56-16	56.0	16V C.T. @ 3.5 A	8V @ 7.0 A
MHS-2.5-20	2.5	20V C.T. @ 0.12 A	10V @ 0.24 A
MHS-5.0-20	5.0	20V C.T. @ 0.25 A	10V @ 0.5 A
MHS-10-20	10.0	20V C.T. @ 0.5 A	10V @ 1.0 A
MHS-20-20	20.0	20V C.T. @ 1.0 A	10V @ 2.0 A
MHS-30-20	30.0	20V C.T. @ 1.5 A	10V @ 3.0 A
MHS-56-20	56.0	20V C.T. @ 2.8 A	10V @ 5.6 A
MHS-2.5-24	2.5	24V C.T. @ 0.1 A	12V @ 0.2 A
MHS-5.0-24	5.0	24V C.T. @ 0.21 A	12V @ 0.42 A
MHS-10-24	10.0	24V C.T. @ 0.42 A	12V @ 0.84 A
MHS-20-24	20.0	24V C.T. @ 0.83 A	12V @ 1.66 A
MHS-30-24	30.0	24V C.T. @ 1.25 A	12V @ 2.5 A
MHS-56-24	56.0	24V C.T. @ 2.33 A	12V @ 4.66 A
MHS-2.5-28	2.5	28V C.T. @ 0.09 A	14V @ 0.18 A
MHS-5.0-28	5.0	28V C.T. @ 0.18 A	14V @ 0.36 A
MHS-10-28	10.0	28V C.T. @ 0.36 A	14V @ 0.72 A
MHS-20-28	20.0	28V C.T. @ 0.72 A	14V @ 1.44 A
MHS-30-28	30.0	28V C.T. @ 1.06 A	14V @ 2.12 A
MHS-56-28	56.0	28V C.T. @ 2.0 A	14V @ 4.0 A
MHS-2.5-36	2.5	36V C.T. @ 0.07 A	18V @ 0.14 A
MHS-5.0-36	5.0	36V C.T. @ 0.14 A	18V @ 0.28 A
MHS-10-36	10.0	36V C.T. @ 0.28 A	18V @ 0.56 A
MHS-20-36	20.0	36V C.T. @ 0.56 A	18V @ 1.12 A
MHS-30-36	30.0	36V C.T. @ 0.82 A	16V @ 1.64 A
MHS-56-36	56.0	36V C.T. @ 1.56 A	18V @ 3.12 A

Mechanical Dimensions:



VA	WT. (lb)	L ±0.04 (1.02)	W ±0.04 (1.02)	H ±0.04 (1.02)	A ±0.012 (0.30)	B ±0.012 (0.30)
2.5	0.25	1.634 (41.50)	1.320 (33.53)	1.125 (28.58)	0.200 (5.08)	0.250 (6.35)
5.0	0.37	1.634 (41.50)	1.320 (33.53)	1.375 (34.93)	0.200 (5.08)	0.400 (10.16)
10.0	0.53	1.910 (48.51)	1.600 (40.64)	1.358 (34.49)	0.200 (5.08)	0.400 (10.16)
20.0	0.90	2.265 (57.53)	1.890 (48.01)	1.594 (40.49)	0.400 (10.16)	0.400 (10.16)
30.0	1.15	2.625 (66.68)	2.195 (55.75)	1.562 (39.67)	0.550 (13.97)	0.275 (6.99)
56.0	1.70	3.030 (76.96)	2.520 (64.01)	1.791 (45.49)	0.600 (15.24)	0.300 (7.62)

VA	C ±0.02 (0.51)	D ±0.04 (1.02)	E ±0.04 (1.02)	F ±0.04 (1.02)	PIN DIM ±0.006 (0.15)	HOLE ±0.02 (0.51)
2.5	1.000 (25.4)	-----	-----	1.062 (26.97)	0.025 SQ (0.635 SQ)	0.126 (3.20)
5.0	1.000 (25.4)	-----	-----	1.062 (26.97)	0.025 SQ (0.635 SQ)	0.126 (3.20)
10.0	1.140 (28.96)	-----	-----	1.260 (32.00)	0.038 SQ (0.97 SQ)	0.126 (3.20)
20.0	1.460 (37.08)	-----	-----	1.500 (38.1)	0.038 SQ (0.97 SQ)	0.150 (3.81)
30.0	1.680 (42.67)	2.20 (55.88)	1.732 (43.99)	-----	0.045 SQ (1.143 SQ)	0.177 (4.50)
56.0	1.900 (48.26)	2.52 (64.01)	2.00 (50.8)	-----	0.045 SQ (1.143 SQ)	0.197 (5.00)

Specifications subject to change. Custom versions of any Minntronix Products are available upon request.

MPS SERIES

MINNTRONIX

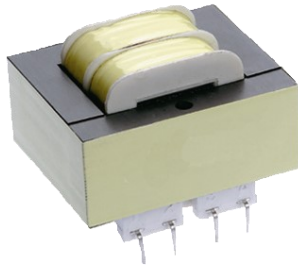
Wind Up the Best®

Split Bobbin Power Transformers



Phone: 1.605.884.0195
 Fax: 1.605.884.0199
 www.minntronix.com

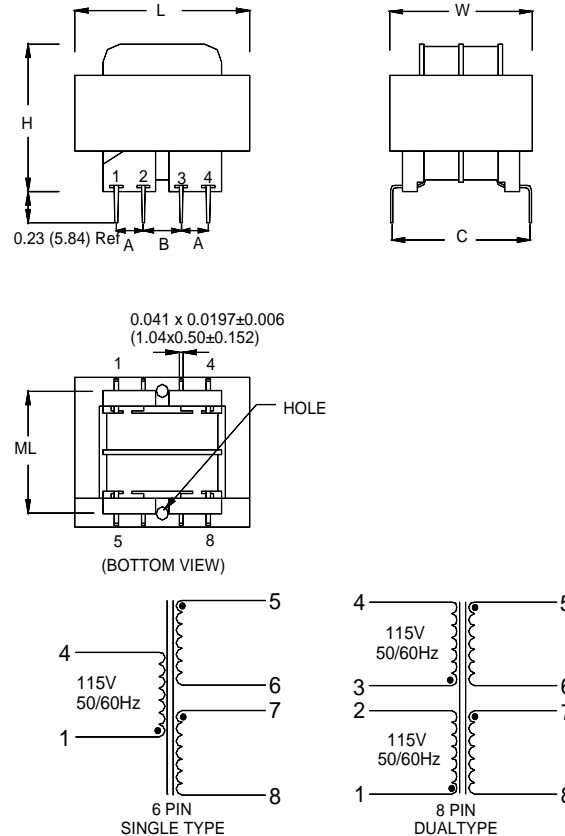
MPS SERIES



- MPS: UL Approved Canada/USA: Class B
- High Isolation — 2500V Hi-pot
- Low capacitance coupling — minimizes line noise and false triggering
- 115V Single or 115/230V 50/60Hz Dual Primary
- Dual Secondary's for either parallel or series configuration

PART NUMBER		SECONDARY RATING (RMS)	
Single 115V 6 pin	Dual 115/230V 8 pin	Series	Parallel
MPS-2-10	MPS-2-10-D	10V C.T. @ 0.11A	5V @ 0.22A
MPS-3-10	MPS-3-10-D	10V C.T. @ 0.25A	5V @ 0.5A
MPS-4-10	MPS-4-10-D	10V C.T. @ 0.6A	5V @ 1.2A
MPS-5-10	MPS-5-10-D	10V C.T. @ 1.2A	5V @ 2.4A
MPS-6-10	MPS-6-10-D	10V C.T. @ 2A	5V @ 4A
MPS-7-10	MPS-7-10-D	10V C.T. @ 3.6A	5V @ 7.2A
MPS-2-12	MPS-2-12-D	12.6V C.T. @ 0.09A	6.3V @ 0.18A
MPS-3-12	MPS-3-12-D	12.6V C.T. @ 0.2A	6.3V @ 0.4A
MPS-4-12	MPS-4-12-D	12.6V C.T. @ 0.5A	6.3V @ 1.0A
MPS-5-12	MPS-5-12-D	12.6V C.T. @ 1.0A	6.3V @ 2.0A
MPS-6-12	MPS-6-12-D	12.6V C.T. @ 1.6A	6.3V @ 3.2A
MPS-7-12	MPS-7-12-D	12.6V C.T. @ 2.85A	6.3V @ 5.7A
MPS-2-16	MPS-2-16-D	16V C.T. @ 0.07A	8V @ 0.14A
MPS-3-16	MPS-3-16-D	16V C.T. @ 0.15A	8V @ 0.3A
MPS-4-16	MPS-4-16-D	16V C.T. @ 0.4A	8V @ 0.8A
MPS-5-16	MPS-5-16-D	16V C.T. @ 0.8A	8V @ 1.6A
MPS-6-16	MPS-6-16-D	16V C.T. @ 1.25A	8V @ 2.5A
MPS-7-16	MPS-7-16-D	16V C.T. @ 2.25A	8V @ 4.5A
MPS-2-20	MPS-2-20-D	20V C.T. @ 0.055A	10V @ 0.11A
MPS-3-20	MPS-3-20-D	20V C.T. @ 0.12A	10V @ 0.24A
MPS-4-20	MPS-4-20-D	20V C.T. @ 0.3A	10V @ 0.6A
MPS-5-20	MPS-5-20-D	20V C.T. @ 0.6A	10V @ 1.2A
MPS-6-20	MPS-6-20-D	20V C.T. @ 1A	10V @ 2A
MPS-7-20	MPS-7-20-D	20V C.T. @ 1.8A	10V @ 3.6A
MPS-2-24	MPS-2-24-D	24V C.T. @ 0.045A	12V @ 0.09A
MPS-3-24	MPS-3-24-D	24V C.T. @ 0.1A	12V @ 0.2A
MPS-4-24	MPS-4-24-D	24V C.T. @ 0.25A	12V @ 0.5A
MPS-5-24	MPS-5-24-D	24V C.T. @ 0.5A	12V @ 1.0A
MPS-6-24	MPS-6-24-D	24V C.T. @ 0.8A	12V @ 1.6A
MPS-7-24	MPS-7-24-D	24V C.T. @ 1.5A	12V @ 3.0A
MPS-2-28	MPS-2-28-D	28V C.T. @ 0.04A	14V @ 0.08A
MPS-3-28	MPS-3-28-D	28V C.T. @ 0.085A	14V @ 0.17A
MPS-4-28	MPS-4-28-D	28V C.T. @ 0.2A	14V @ 0.4A
MPS-5-28	MPS-5-28-D	28V C.T. @ 0.42A	14V @ 0.84A
MPS-6-28	MPS-6-28-D	28V C.T. @ 0.7A	14V @ 1.4A
MPS-7-28	MPS-7-28-D	28V C.T. @ 1.3A	14V @ 2.6A
MPS-2-36	MPS-2-36-D	36V C.T. @ 0.03A	18V @ 0.06A
MPS-3-36	MPS-3-36-D	36V C.T. @ 0.065A	18V @ 0.13A
MPS-4-36	MPS-4-36-D	36V C.T. @ 0.17A	18V @ 0.34A
MPS-5-36	MPS-5-36-D	36V C.T. @ 0.35A	18V @ 0.7A
MPS-6-36	MPS-6-36-D	36V C.T. @ 0.55A	18V @ 1.1A
MPS-7-36	MPS-7-36-D	36V C.T. @ 1A	18V @ 2A
MPS-2-48	MPS-2-48-D	48V C.T. @ 0.023A	24V @ 0.046A
MPS-3-48	MPS-3-48-D	48V C.T. @ 0.05A	24V @ 0.1A
MPS-4-48	MPS-4-48-D	48V C.T. @ 0.125A	24V @ 0.25A
MPS-5-48	MPS-5-48-D	48V C.T. @ 0.25A	24V @ 0.5A
MPS-6-48	MPS-6-48-D	48V C.T. @ 0.4A	24V @ 0.8A
MPS-7-48	MPS-7-48-D	48V C.T. @ 0.75A	24V @ 1.5A
MPS-2-56	MPS-2-56-D	56V C.T. @ 0.02A	28V @ 0.04A
MPS-3-56	MPS-3-56-D	56V C.T. @ 0.045A	28V @ 0.09A
MPS-4-56	MPS-4-56-D	56V C.T. @ 0.11A	28V @ 0.22A
MPS-5-56	MPS-5-56-D	56V C.T. @ 0.22A	28V @ 0.44A
MPS-6-56	MPS-6-56-D	56V C.T. @ 0.35A	28V @ 0.7A
MPS-7-56	MPS-7-56-D	56V C.T. @ 0.65A	28V @ 1.3A
MPS-2-120	MPS-2-120-D	120V C.T. @ 0.01A	60V @ 0.02A
MPS-3-120	MPS-3-120-D	120V C.T. @ 0.02A	60V @ 0.04A
MPS-4-120	MPS-4-120-D	120V C.T. @ 0.05A	60V @ 0.1A
MPS-5-120	MPS-5-120-D	120V C.T. @ 0.1A	60V @ 0.2A
MPS-6-120	MPS-6-120-D	120V C.T. @ 0.16A	60V @ 0.32A
MPS-7-120	MPS-7-120-D	120V C.T. @ 0.3A	60V @ 0.6A

Mechanical Dimensions:



UNIT: Inch (mm)

SIZE	VA	L ±0.04 (1.02)	W ±0.04 (1.02)	H ±0.04 (1.02)	ML ±0.02 (0.51)	A ±0.012 (0.30)	B ±0.012 (0.30)	C ±0.02 (0.51)	HOLE ±0.02 (0.51)
2	1.1	1.400 (35.56)	1.185 (30.10)	0.938 (23.83)	-----	0.250 (6.35)	0.250 (6.35)	1.200 (30.48)	-----
3	2.4	1.400 (35.56)	1.185 (30.10)	1.188 (30.18)	-----	0.250 (6.35)	0.250 (6.35)	1.200 (30.48)	-----
4	6.0	1.634 (41.50)	1.320 (33.53)	1.313 (33.35)	1.062 (26.97)	0.250 (6.35)	0.350 (8.89)	1.280 (32.51)	0.126 (3.20)
5	12	1.910 (48.51)	1.600 (40.64)	1.438 (36.53)	1.260 (32.00)	0.300 (7.62)	0.400 (10.16)	1.410 (35.81)	0.126 (3.20)
6	20	2.265 (57.53)	1.890 (48.01)	1.438 (36.53)	1.500 (38.1)	0.300 (7.62)	0.400 (10.16)	1.600 (40.64)	0.150 (3.81)
7	36	2.625 (66.68)	2.195 (55.75)	1.563 (39.70)	1.732 (43.99)	0.400 (10.16)	0.400 (10.16)	1.850 (46.99)	0.177 (4.50)

MPL-2.5/6/12VA SERIES

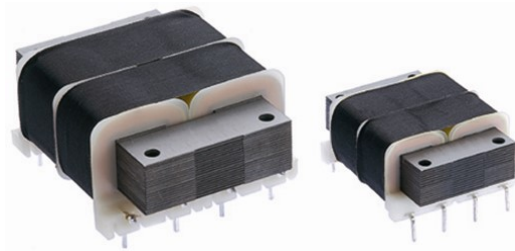
MINNTRONIX

Wind Up the Best®

Low Profile Power Transformers



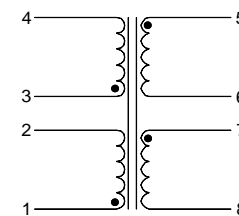
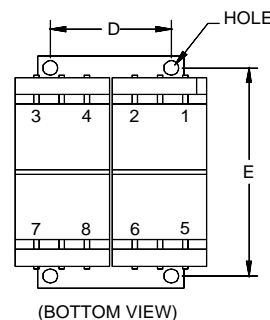
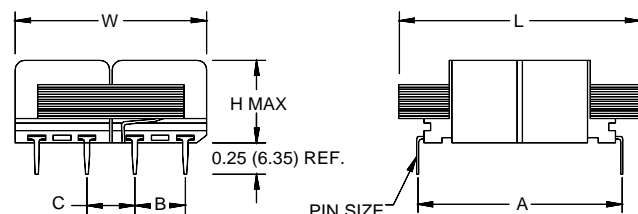
Phone: 1.605.884.0195
 Fax: 1.605.884.0199
 www.minntronix.com



- MPL : UL Approved: Temp Class A
- Primary 115/230V 50/60Hz input, single secondary or dual isolated output for DC supplies (2.5, 6 and 12VA)
- Split bobbin for low leakage application, 1500V hi-pot
- Low capacity coupling minimizes line noise and false triggering

Part Number	Size (VA)	SECONDARY RATING (RMS)	
		Series	Parallel
MPL-10-250	2.5	10V C.T. @ 250mA	5V @ 500mA
MPL-10-600	6	10V C.T. @ 600mA	5V @ 1.2A
MPL-10-1200	12	10V C.T. @ 1200mA	5V @ 2.4A
MPL-12-200	2.5	12.6V C.T. @ 200mA	6.3V @ 400mA
MPL-12-450	6	12.6V C.T. @ 450mA	6.3V @ 900mA
MPL-12-900	12	12.6V C.T. @ 900mA	6.3V @ 1.8A
MPL-16-150	2.5	16V C.T. @ 150mA	8V @ 300mA
MPL-16-350	6	16V C.T. @ 350mA	8V @ 700mA
MPL-16-700	12	16V C.T. @ 700mA	8V @ 1.4A
MPL-20-125	2.5	20V C.T. @ 125mA	10V @ 250mA
MPL-20-300	6	20V C.T. @ 300mA	10V @ 600mA
MPL-20-600	12	20V C.T. @ 600mA	10V @ 1.2A
MPL-24-100	2.5	24V C.T. @ 100mA	12V @ 200mA
MPL-24-250	6	24V C.T. @ 250mA	12V @ 500mA
MPL-24-500	12	24V C.T. @ 500mA	12V @ 1A
MPL-30-85	2.5	30V C.T. @ 85mA	15V @ 170mA
MPL-30-200	6	30V C.T. @ 200mA	15V @ 400mA
MPL-30-400	12	30V C.T. @ 400mA	15V @ 800mA
MPL-34-75	2.5	34V C.T. @ 75mA	17V @ 150mA
MPL-34-170	6	34V C.T. @ 170mA	17V @ 340mA
MPL-34-340	12	34V C.T. @ 340mA	17V @ 680mA
MPL-40-60	2.5	40V C.T. @ 60mA	20V @ 120mA
MPL-40-150	6	40V C.T. @ 150mA	20V @ 300mA
MPL-40-300	12	40V C.T. @ 300mA	20V @ 600mA
MPL-56-45	2.5	56V C.T. @ 45mA	28V @ 90mA
MPL-56-100	6	56V C.T. @ 100mA	28V @ 200mA
MPL-56-200	12	56V C.T. @ 200mA	28V @ 400mA
MPL-88-28	2.5	88V C.T. @ 28mA	44V @ 56mA
MPL-88-65	6	88V C.T. @ 65mA	44V @ 130mA
MPL-88-130	12	88V C.T. @ 130mA	44V @ 260mA
MPL-120-20	2.5	120V C.T. @ 20mA	60V @ 40mA
MPL-120-50	6	120V C.T. @ 50mA	60V @ 100mA
MPL-120-100	12	120V C.T. @ 100mA	60V @ 200mA
MPL-230-10	2.5	230V C.T. @ 10mA	115V @ 20mA
MPL-230-25	6	230V C.T. @ 25mA	115V @ 50mA
MPL-230-50	12	230V C.T. @ 50mA	115V @ 100mA

Mechanical Dimensions:



UNIT: Inch (mm)

1. Regulation of size 2.5 and 6VA sizes is 30%, i.e., no load-secondary voltage is 30% higher than that of full load voltage
2. Regulation of size 12VA sizes is 20%

SIZE (VA)	L ±0.04 (1.02)	W ±0.04 (1.02)	H ±0.04 (1.02)	A ±0.02 (0.51)	B ±0.012 (0.30)
2.5	1.875 (47.63)	1.562 (39.67)	0.650 (16.51)	1.600 (40.64)	0.375 (9.53)
6	1.875 (47.63)	1.562 (39.67)	0.850 (21.59)	1.600 (40.64)	0.375 (9.53)
12	2.520 (64.01)	2.000 (50.8)	1.065 (27.05)	2.000 (50.8)	0.500 (12.7)

SIZE (VA)	C ±0.012 (0.30)	D ±0.02 (0.51)	E ±0.02 (0.51)	PIN SIZE ±0.01 (0.254)	HOLE ±0.02 (0.51)
2.5	0.375 (9.53)	0.874 (22.20)	1.624 (41.25)	0.040x0.0197 (1.02x5.0)	0.126 (3.20)
6	0.375 (9.53)	0.874 (22.20)	1.624 (41.25)	0.040x0.0197 (1.02x5.0)	0.126 (3.20)
12	0.500 (12.7)	0.984 (24.99)	2.008 (51.00)	0.040x0.0197 (1.02x5.0)	0.165 (4.19)

Specifications subject to change. Custom versions of any Minntronix Products are available upon request.

MPL2.5/6/12VA SERIES

MPL-24/48VA SERIES

MINNTRONIX

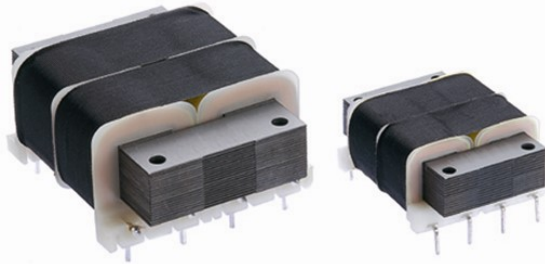
Wind Up the Best®

Low Profile Power Transformers



Phone: 1.605.884.0195
 Fax: 1.605.884.0199
 www.minntronix.com

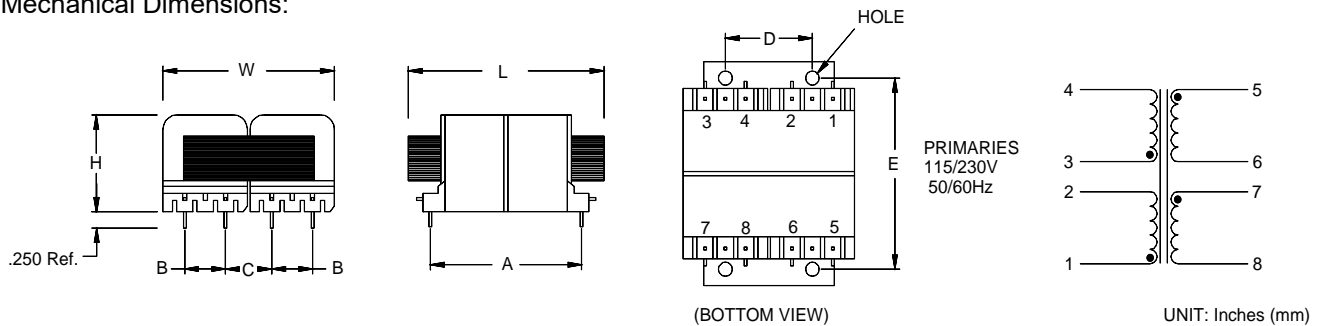
MPL-24/48VA SERIES



- 115/230V 50/60Hz high power (24 and 48VA)
- Rugged high-current pins



Mechanical Dimensions:



Part Number	Size (VA)	SECONDARY RATING (RMS)	
		Series	Parallel
MPL-10-2400	24	10V C.T. @ 2.40A	5V @ 4.80A
MPL-10-4800	48	10V C.T. @ 4.80A	5V @ 9.60A
MPL-12-1900	24	12.6V C.T. @ 1.90A	6.3V @ 3.80A
MPL-12-3800	48	12.6V C.T. @ 3.80A	6.3V @ 7.60A
MPL-16-1500	24	16V C.T. @ 1.50A	8V @ 3.00A
MPL-16-3000	48	16V C.T. @ 3.00A	8V @ 6.00A
MPL-20-1200	24	20V C.T. @ 1.20A	10V @ 2.40A
MPL-20-2400	48	20V C.T. @ 2.40A	10V @ 4.80A
MPL-24-1000	24	24V C.T. @ 1.00A	12V @ 2.00A
MPL-24-2000	48	24V C.T. @ 2.00A	12V @ 4.00A
MPL-30-800	24	30V C.T. @ 800mA	15V @ 1.60A
MPL-30-1600	48	30V C.T. @ 1.60A	15V @ 3.20A
MPL-34-700	24	34V C.T. @ 700mA	17V @ 1.40A
MPL-34-1400	48	34V C.T. @ 1.40A	17V @ 2.80A
MPL-40-600	24	40V C.T. @ 600mA	20V @ 1.20A
MPL-40-1200	48	40V C.T. @ 1.20A	20V @ 2.40A
MPL-56-425	24	56V C.T. @ 425mA	28V @ 850mA
MPL-56-850	48	56V C.T. @ 850mA	28V @ 1.70A

SIZE (VA)	L ±0.02 (0.51)	W ±0.04 (1.02)	H ±0.04 (1.02)	A ±0.02 (0.51)	B ±0.012 (0.31)	C ±0.012 (0.31)	D ±0.02 (0.51)	E ±0.02 (0.51)	PIN SIZE ±0.01 (0.25)	HOLE ±0.02 (0.51)
24	2.87 (72.90)	2.25 (57.15)	1.250 (31.75)	1.900 (48.26)	0.600 (15.24)	0.530 (13.46)	1.315 (33.40)	2.42 (10.67)	0.04 SQ (1.02 SQ)	0.150 (3.81)
48	3.12 (79.25)	2.50 (63.5)	1.375 (34.93)	2.180 (55.37)	0.600 (15.24)	0.660 (16.76)	1.260 (32.00)	2.62 (66.55)	0.04 SQ (1.02 SQ)	0.197 (5.00)

Specifications subject to change. Custom versions of any Minntronix Products are available upon request.

MPC SERIES

MINNTRONIX

Wind Up the Best®

Miniature Plug in Power Transformers



Phone: 1.605.884.0195
 Fax: 1.605.884.0199
 www.minntronix.com



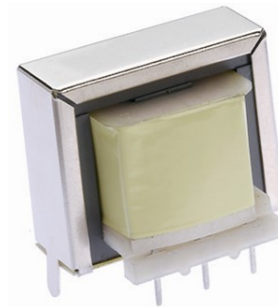
STYLE B



STYLE C



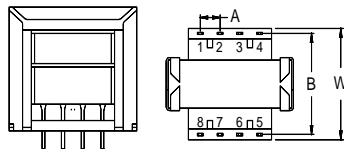
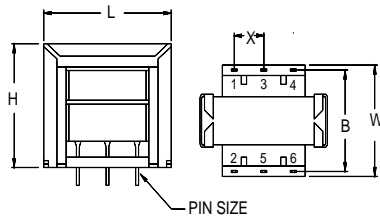
STYLE D



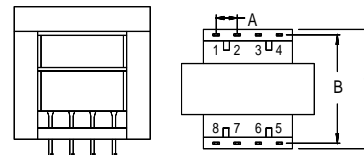
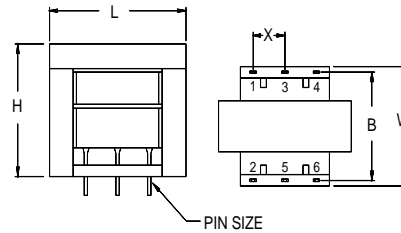
STYLE E

Mechanical Dimensions

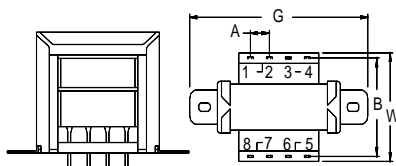
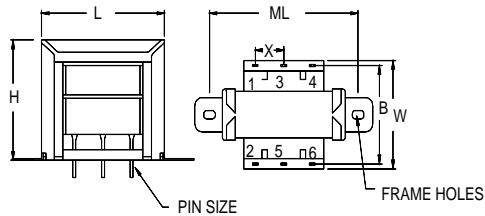
STYLE B (CHANNEL FRAME NO PCB TAB)



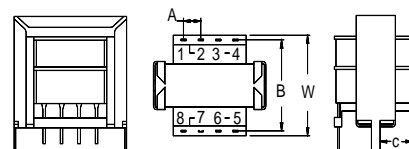
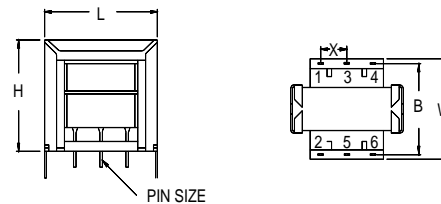
STYLE C (NO CHANNEL FRAME)



STYLE D (CHANNEL FRAME SCREW MOUNT)



STYLE E (CHANNEL FRAME PCB MOUNT)



Specifications subject to change. Custom versions of any Minntronix Products are available upon request.

MPC SERIES



Wind Up the Best®

Miniature Plug in Power Transformers



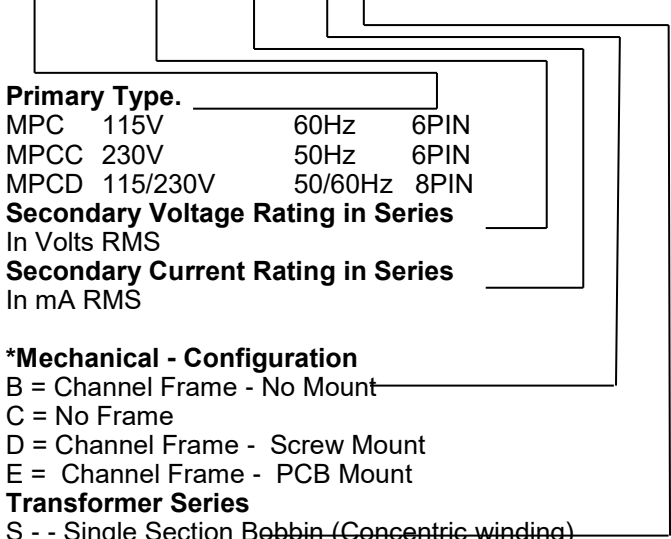
Phone: 1.605.884.0195
 Fax: 1.605.884.0199
 www.minntronix.com

MPC SERIES

- Power transformer-concentric or split winding construction

HOW TO ORDER

MPC - 12 - 350 C D



Primary Type.

MPC 115V 60Hz 6PIN
 MPCC 230V 50Hz 6PIN
 MPCD 115/230V 50/60Hz 8PIN

Secondary Voltage Rating in Series

In Volts RMS

Secondary Current Rating in Series

In mA RMS

*Mechanical - Configuration

B = Channel Frame - No Mount

C = No Frame

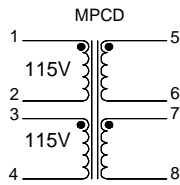
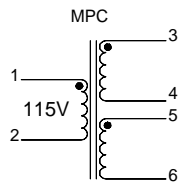
D = Channel Frame - Screw Mount

E = Channel Frame - PCB Mount

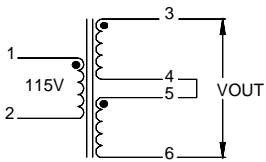
Transformer Series

S - Single Section Bobbin (Concentric winding)

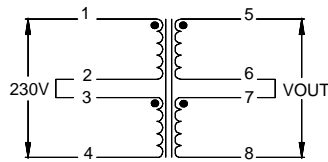
D - Double Section Bobbin (Split winding)



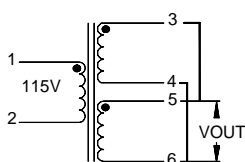
SERIES CONNECTION



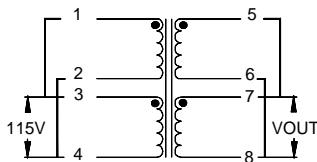
SERIES CONNECTION



PARALLEL CONNECTION



PARALLEL CONNECTION



PRIMARY 50/60 Hz		SECONDARY RATING (RMS)		SIZE (VA)
Single 115V (6 pin)	Dual 115/230V (8 pin)	Series	Parallel	
MPC-10-90_*	MPCD-10-90_*	10V C.T. @ 90 mA	5V @ 180mA	1.0
MPC-10-120_*	MPCD-10-120_*	10V C.T. @ 120mA	5V @ 240mA	1.2
MPC-10-440_*	MPCD-10-440_*	10V C.T. @ 440mA	5V @ 880mA	4.4
MPC-10-1000_*	MPCD-10-1000_*	10V C.T. @ 1A	5V @ 2A	10
MPC-10-2400_*	MPCD-10-2400_*	10V C.T. @ 2.4A	5V @ 4.8A	24
MPC-12-70_*	MPCD-12-70_*	12.6V C.T. @ 70mA	6.3V @ 140mA	1.0
MPC-12-100_*	MPCD-12-100_*	12.6V C.T. @ 100mA	6.3V @ 200mA	1.2
MPC-12-350_*	MPCD-12-350_*	12.6V C.T. @ 350mA	6.3V @ 700mA	4.4
MPC-12-800_*	MPCD-12-800_*	12.6V C.T. @ 800mA	6.3V @ 1.6A	10
MPC-12-2000_*	MPCD-12-2000_*	12.6V C.T. @ 2A	6.3V @ 4A	24
MPC-16-55_*	MPCD-16-55_*	16V C.T. @ 55mA	8V @ 110mA	1.0
MPC-16-75_*	MPCD-16-75_*	16V C.T. @ 75mA	8V @ 150mA	1.2
MPC-16-260_*	MPCD-16-260_*	16V C.T. @ 260mA	8V @ 520mA	4.4
MPC-16-640_*	MPCD-16-640_*	16V C.T. @ 640mA	8V @ 1.28A	10
MPC-16-1500_*	MPCD-16-1500_*	16V C.T. @ 1.5	8V @ 3A	24
MPC-20-45_*	MPCD-20-45_*	20V C.T. @ 45mA	10V @ 90mA	1.0
MPC-20-60_*	MPCD-20-60_*	20V C.T. @ 60mA	10V @ 120mA	1.2
MPC-20-220_*	MPCD-20-220_*	20V C.T. @ 220mA	10V @ 440mA	4.4
MPC-20-500_*	MPCD-20-500_*	20V C.T. @ 500mA	10V @ 1A	10
MPC-20-1200_*	MPCD-20-1200_*	20V C.T. @ 1.2A	10V @ 2.4A	24
MPC-24-35_*	MPCD-24-35_*	24V C.T. @ 35mA	12V @ 70mA	1.0
MPC-24-50_*	MPCD-24-50_*	24V C.T. @ 50mA	12V @ 100mA	1.2
MPC-24-180_*	MPCD-24-180_*	24V C.T. @ 180mA	12V @ 360mA	4.4
MPC-24-450_*	MPCD-24-450_*	24V C.T. @ 450mA	12V @ 900mA	10
MPC-24-1000_*	MPCD-24-1000_*	24V C.T. @ 1A	12V @ 2A	24
MPC-28-30_*	MPCD-28-30_*	28V C.T. @ 30mA	14V @ 60mA	1.0
MPC-28-40_*	MPCD-28-40_*	28V C.T. @ 40mA	14V @ 80mA	1.2
MPC-28-160_*	MPCD-28-160_*	28V C.T. @ 160mA	14V @ 320mA	4.4
MPC-28-360_*	MPCD-28-360_*	28V C.T. @ 360mA	14V @ 720mA	10
MPC-28-800_*	MPCD-28-800_*	28V C.T. @ 800mA	14V @ 1.6A	24
MPC-34-25_*	MPCD-34-25_*	34V C.T. @ 25mA	17V @ 50mA	1.0
MPC-34-35_*	MPCD-34-35_*	34V C.T. @ 35mA	17V @ 70mA	1.2
MPC-34-125_*	MPCD-34-125_*	34V C.T. @ 125mA	17V @ 250mA	4.4
MPC-34-300_*	MPCD-34-300_*	34V C.T. @ 300mA	17V @ 600mA	10
MPC-34-700_*	MPCD-34-700_*	34V C.T. @ 700mA	17V @ 1.4A	24
MPC-40-20_*	MPCD-40-20_*	40V C.T. @ 20mA	20V @ 40mA	1.0
MPC-40-30_*	MPCD-40-30_*	40V C.T. @ 30mA	20V @ 60mA	1.2
MPC-40-110_*	MPCD-40-110_*	40V C.T. @ 110mA	20V @ 220mA	4.4
MPC-40-250_*	MPCD-40-250_*	40V C.T. @ 250mA	20V @ 500mA	10
MPC-40-600_*	MPCD-40-600_*	40V C.T. @ 600mA	20V @ 1.2A	24
MPC-56-15_*	MPCD-56-15_*	56V C.T. @ 15mA	28V @ 30mA	1.0
MPC-56-20_*	MPCD-56-20_*	26V C.T. @ 20mA	28V @ 40mA	1.2
MPC-56-80_*	MPCD-56-80_*	56V C.T. @ 80mA	28V @ 160mA	4.4
MPC-56-180_*	MPCD-56-180_*	56V C.T. @ 180mA	28V @ 360mA	10
MPC-56-420_*	MPCD-56-420_*	56V C.T. @ 420mA	28V @ 840mA	24
MPC-120-8_*	MPCD-120-8_*	120V C.T. @ 8mA	60V @ 16mA	1.0
MPC-120-10_*	MPCD-120-10_*	120V C.T. @ 10mA	60V @ 20mA	1.2
MPC-120-35_*	MPCD-120-35_*	120V C.T. @ 35mA	60V @ 70mA	4.4
MPC-120-85_*	MPCD-120-85_*	120V C.T. @ 85mA	60V @ 170mA	10
MPC-120-200_*	MPCD-120-200_*	120V C.T. @ 200mA	60V @ 400mA	24

VA	STYLE B.C.D.E.				STYLE C			STYLE B.D.E			STYLE D			STYLE E
	6 pin X±0.012 (X±0.31)	8 pin A±0.012 (A±0.51)	B ±0.04 (1.02)	PIN SIZE ±0.008 (0.203)	L ±0.04 (1.02)	W ±0.04 (1.02)	H ±0.04 (1.02)	L ±0.04 (1.02)	W ±0.04 (1.02)	H ±0.04 (1.02)	G ±0.04 (1.02)	ML ±0.04 (1.02)	Frame Hole ±0.02 (0.51)	C ±0.02 (0.51)
1.0	0.250 (6.35)	0.200 (5.08)	1.200 (30.48)	0.045X0.020 (1.143X0.51)	1.025 (26.04)	1.375 (34.93)	0.830 (21.08)	---	---	---	---	---	---	0.13X0.03 (3.30X0.762)
1.2	0.312 (7.92)	0.200 (5.08)	1.000 (25.40)	0.039X0.020 (0.99X0.51)	1.400 (35.56)	1.125 (28.58)	1.188 (30.18)	1.500 (38.10)	1.125 (28.58)	1.220 (30.99)	2.062 (52.37)	1.770 (44.96)	0.138X0.217 (3.51X5.51)	0.13X0.03 (3.30X0.762)
4.4	0.400 (10.16)	0.250 (6.35)	1.100 (27.94)	0.039X0.020 (0.99X0.51)	1.634 (41.50)	1.250 (31.75)	1.375 (34.93)	1.720 (43.69)	1.250 (31.75)	1.400 (35.56)	2.375 (60.33)	2.000 (50.8)	0.157X0.236 (3.99X5.99)	0.19X0.03 (4.83X0.762)
10	0.400 (10.16)	0.250 (6.35)	1.300 (33.02)	0.039X0.020 (0.99X0.51)	1.910 (48.51)	1.438 (36.53)	1.625 (41.28)	1.970 (50.04)	1.438 (36.53)	1.660 (42.16)	2.813 (71.45)	2.380 (60.45)	0.157X0.236 (3.99X5.99)	---
24	0.400 (10.16)	0.250 (6.35)	2.100 (53.34)	0.039X0.020 (0.99X0.51)	1.634 (41.50)	2.250 (57.15)	1.375 (34.93)	---	---	---	---	---	---	---

Specifications subject to change. Custom versions of any Minntronix Products are available upon request.

MPPS.MPPD SERIES

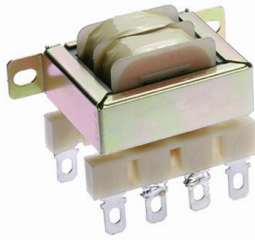
MINNTRONIX

Wind Up the Best®

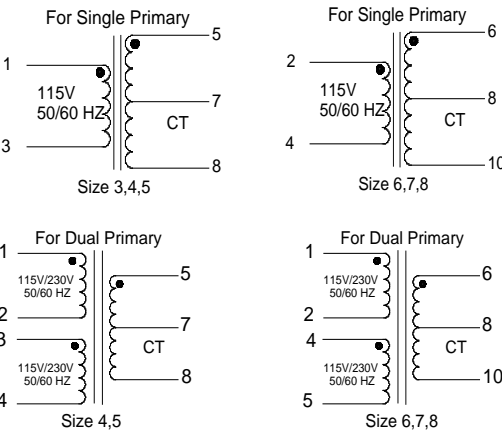
Side Termination Power Transformers



Phone: 1.605.884.0195
 Fax: 1.605.884.0199
 www.minntronix.com



- PCB screw mounting
- Side termination for input / output connection
- Optional lead wire termination available
- 115V Single or 115/230V 50/60Hz Dual Primary

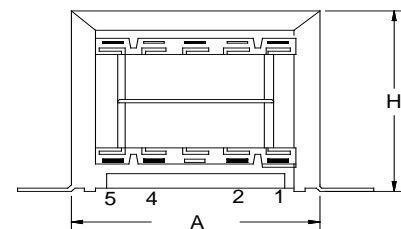
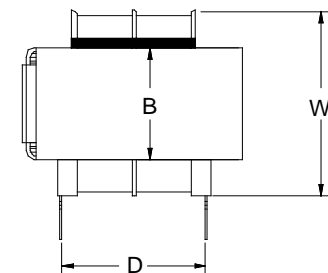
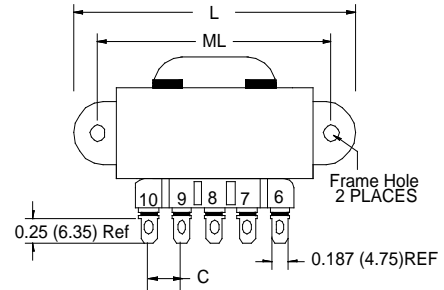


Size	VA	L MAX	W MAX	H MAX	A MAX	B REF	C REF	D REF	ML ±0.04 (1.0)	Frame Hole REF
3	2.4	2.22 (56.5)	1.30 (33.0)	1.30 (33.0)	1.50 (38.0)	0.59 (15.0)	0.39 (10.0)	0.94 (24.0)	1.77 (45.0)	0.138x0.256 (3.5x6.5)
4	6	2.42 (61.5)	1.36 (34.5)	1.42 (36.0)	1.73 (44.0)	0.75 (19.0)	0.39 (10.0)	1.04 (26.5)	2.00 (50.8)	0.157x0.236 (4.0x6.0)
5	12	2.87 (73.0)	1.57 (40.0)	1.71 (43.5)	2.00 (50.8)	0.89 (22.6)	0.39 (10.0)	1.10 (28.0)	2.36 (60.0)	0.157x0.236 (4.0x6.0)
6	30	3.29 (83.5)	1.79 (45.5)	2.05 (52.0)	2.42 (61.5)	1.08 (27.43)	0.39 (10.0)	1.30 (33.0)	2.81 (71.45)	Ø 0.187 (4.76)
7	56	3.66 (93.0)	2.24 (57.0)	2.34 (59.5)	2.74 (69.5)	1.13 (28.7)	0.40 (10.1)	1.46 (37.0)	3.13 (79.5)	Ø 0.189 (4.8)
8	100	4.09 (104)	2.42 (61.5)	2.72 (69.0)	3.13 (78.4)	1.38 (35.0)	0.40 (10.1)	1.65 (42.0)	3.56 (90.4)	0.209x0.236 (5.3x6.0)

PART NUMBER		SECONDARY
Single 115V	Dual 115/230V	Rating (RMS)
MPPS-3-10	Not Available	10V C.T. @ 0.25A
MPPS-4-10	MPPD-4-10	10V C.T. @ 0.60A
MPPS-5-10	MPPD-5-10	10V C.T. @ 1.2A
MPPS-6-10	MPPD-6-10	10V C.T. @ 3.0A
MPPS-7-10	MPPD-7-10	10V C.T. @ 5.0A
MPPS-8-10	MPPD-8-10	10V C.T. @ 10A
MPPS-3-12	Not Available	12.6V C.T. @ 0.20A
MPPS-4-12	MPPD-4-12	12.6V C.T. @ 0.50A
MPPS-5-12	MPPD-5-12	12.6V C.T. @ 1.0A
MPPS-6-12	MPPD-6-12	12.6V C.T. @ 2.5A
MPPS-7-12	MPPD-7-12	12.6V C.T. @ 4.0A
MPPS-8-12	MPPD-8-12	12.6V C.T. @ 8.0A
MPPS-3-16	Not Available	16V C.T. @ .015A
MPPS-4-16	MPPD-4-16	16V C.T. @ 0.40A
MPPS-5-16	MPPD-5-16	16V C.T. @ 0.80A
MPPS-6-16	MPPD-6-16	16V C.T. @ 2.0A
MPPS-7-16	MPPD-7-16	16V C.T. @ 3.5A
MPPS-8-16	MPPD-8-16	16V C.T. @ 6.25A
MPPS-3-20	Not Available	20V C.T. @ 0.12A
MPPS-4-20	MPPD-4-20	20V C.T. @ 0.30A
MPPS-5-20	MPPD-5-20	20V C.T. @ 0.60A
MPPS-6-20	MPPD-6-20	20V C.T. @ 1.5A
MPPS-7-20	MPPD-7-20	20V C.T. @ 2.8A
MPPS-8-20	MPPD-8-20	20V C.T. @ 5.0A
MPPS-3-24	Not Available	24V C.T. @ 0.10A
MPPS-4-24	MPPD-4-24	24V C.T. @ 0.25A
MPPS-5-24	MPPD-5-24	24V C.T. @ 0.50A
MPPS-6-24	MPPD-6-24	24V C.T. @ 1.25A
MPPS-7-24	MPPD-7-24	24V C.T. @ 2.4A
MPPS-8-24	MPPD-8-24	24V C.T. @ 4.0A

PART NUMBER		SECONDARY
Single 115V	Dual 115/230V	Rating (RMS)
MPPS-3-28	Not Available	28V C.T. @ 0.085A
MPPS-4-28	MPPD-4-28	28V C.T. @ 0.20A
MPPS-5-28	MPPD-5-28	28V C.T. @ 0.42A
MPPS-6-28	MPPD-6-28	28V C.T. @ 1.1A
MPPS-7-28	MPPD-7-28	28V C.T. @ 2.0A
MPPS-8-28	MPPD-8-28	28V C.T. @ 3.6A
MPPS-3-36	Not Available	36V C.T. @ 0.065A
MPPS-4-36	MPPD-4-36	36V C.T. @ 0.17A
MPPS-5-36	MPPD-5-36	36V C.T. @ 0.35A
MPPS-6-36	MPPD-6-36	36V C.T. @ 0.85A
MPPS-7-36	MPPD-7-36	36V C.T. @ 1.5A
MPPS-8-36	MPPD-8-36	36V C.T. @ 2.8A
MPPS-3-48	Not Available	48V C.T. @ 0.05A
MPPS-4-48	MPPD-4-48	48V C.T. @ 0.125A
MPPS-5-48	MPPD-5-48	48V C.T. @ 0.25A
MPPS-6-48	MPPD-6-48	48V C.T. @ 0.63A
MPPS-7-48	MPPD-7-48	48V C.T. @ 1.2A
MPPS-8-48	MPPD-8-48	48V C.T. @ 2.0A
MPPS-3-56	Not Available	56V C.T. @ 0.045A
MPPS-4-56	MPPD-4-56	56V C.T. @ 0.11A
MPPS-5-56	MPPD-5-56	56V C.T. @ 0.22A
MPPS-6-56	MPPD-6-56	56V C.T. @ 0.54A
MPPS-7-56	MPPD-7-56	56V C.T. @ 1.00A
MPPS-8-56	MPPD-8-56	56V C.T. @ 1.8A
MPPS-3-120	Not Available	120V C.T. @ 0.02A
MPPS-4-120	MPPD-4-120	120V C.T. @ 0.05A
MPPS-5-120	MPPD-5-120	120V C.T. @ 0.10A
MPPS-6-120	MPPD-6-120	120V C.T. @ 0.25A
MPPS-7-120	MPPD-7-120	120V C.T. @ 0.50A
MPPS-8-120	MPPD-8-120	120V C.T. @ 0.85A

Mechanical Dimensions:



Size 3,4,5: 8 Pins
 Size 6,7,8: 10 Pins

Inch (mm)

Specifications subject to change. Custom versions of any Minntronix Products are available upon request.

MPPS.MPPD SERIES